

Appendix A

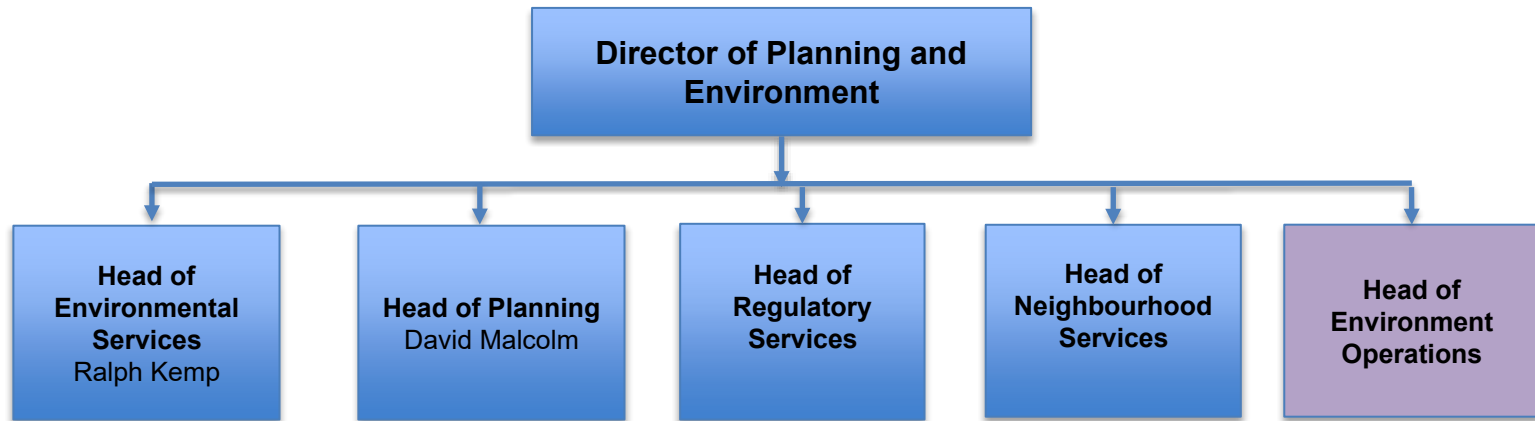
Planning and Environment Division (post ASDV insourcing)

Open

Fair

Green

Planning and Environment Management Team



Roles coming back into the Council from ANSA (April 25)

Note: 2 Parks Design Consultant staff (1.8FTE) transferring into Planning Service

Open

Fair

Green

Planning and Environment

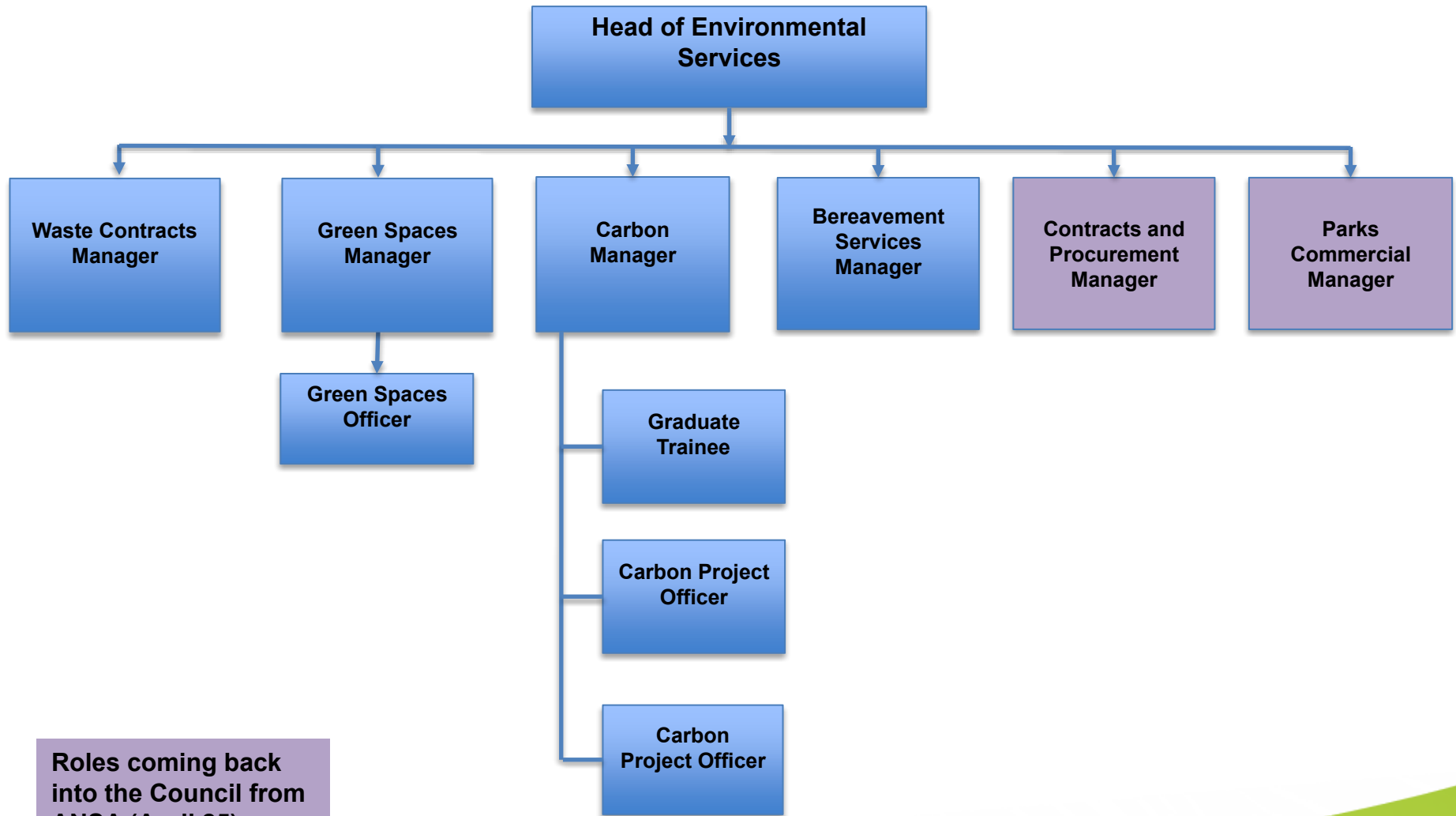
Environmental Services

Open

Fair

Green

Environmental Services Management Team



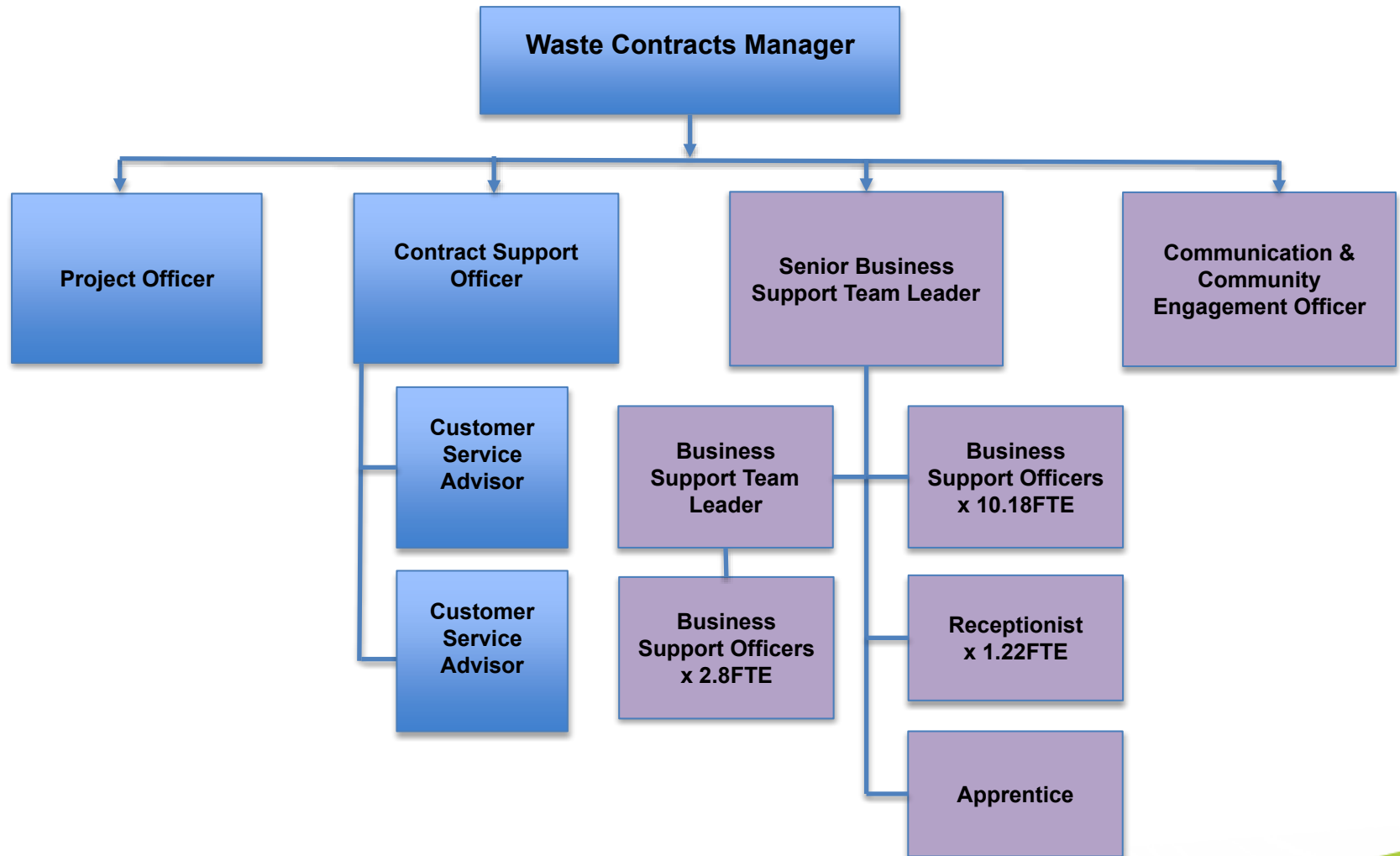
Roles coming back into the Council from ANSA (April 25)

Open

Fair

Green

Waste Services Team

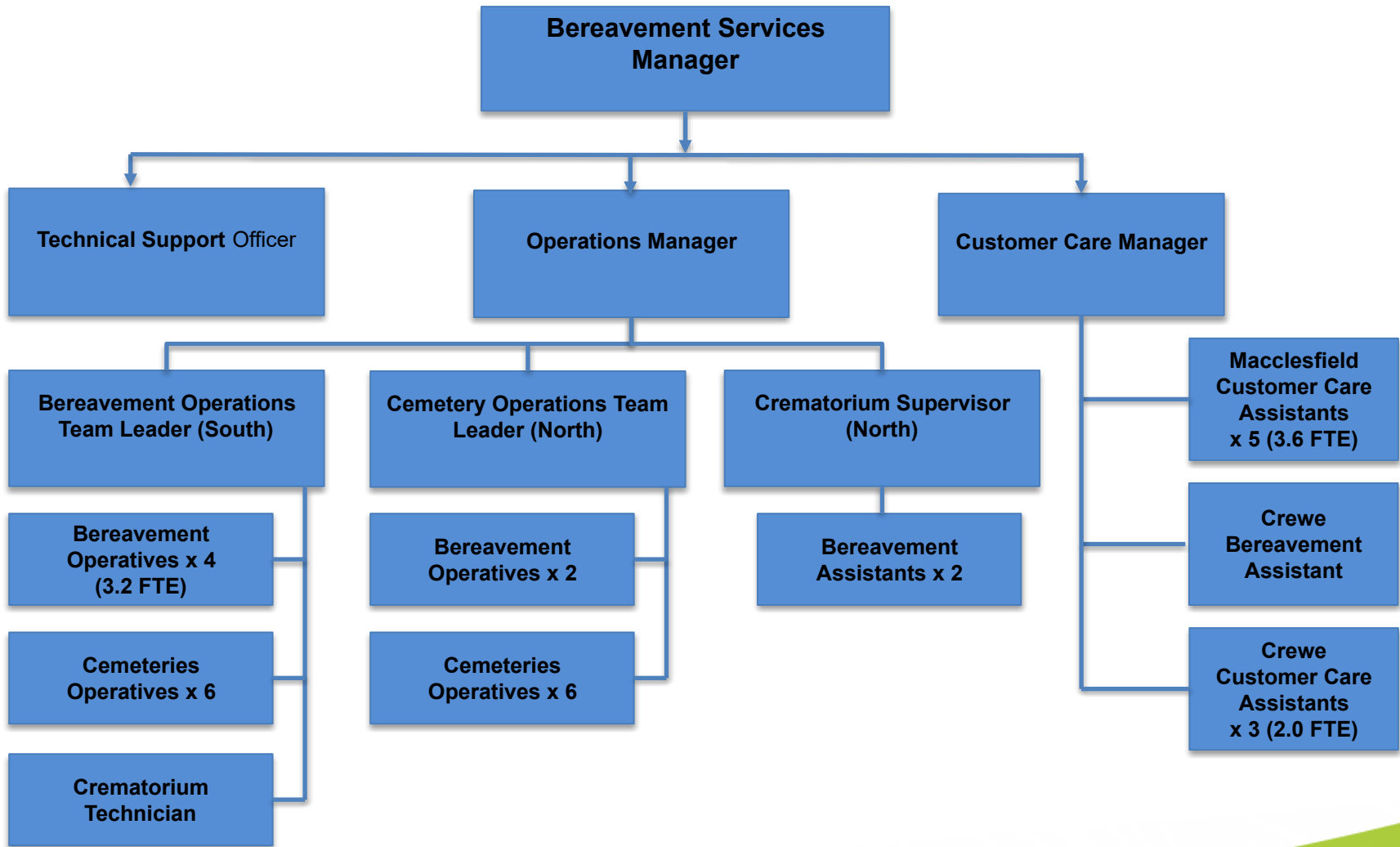


Open

Fair

Green

Bereavement Services Team (was Orbitas)

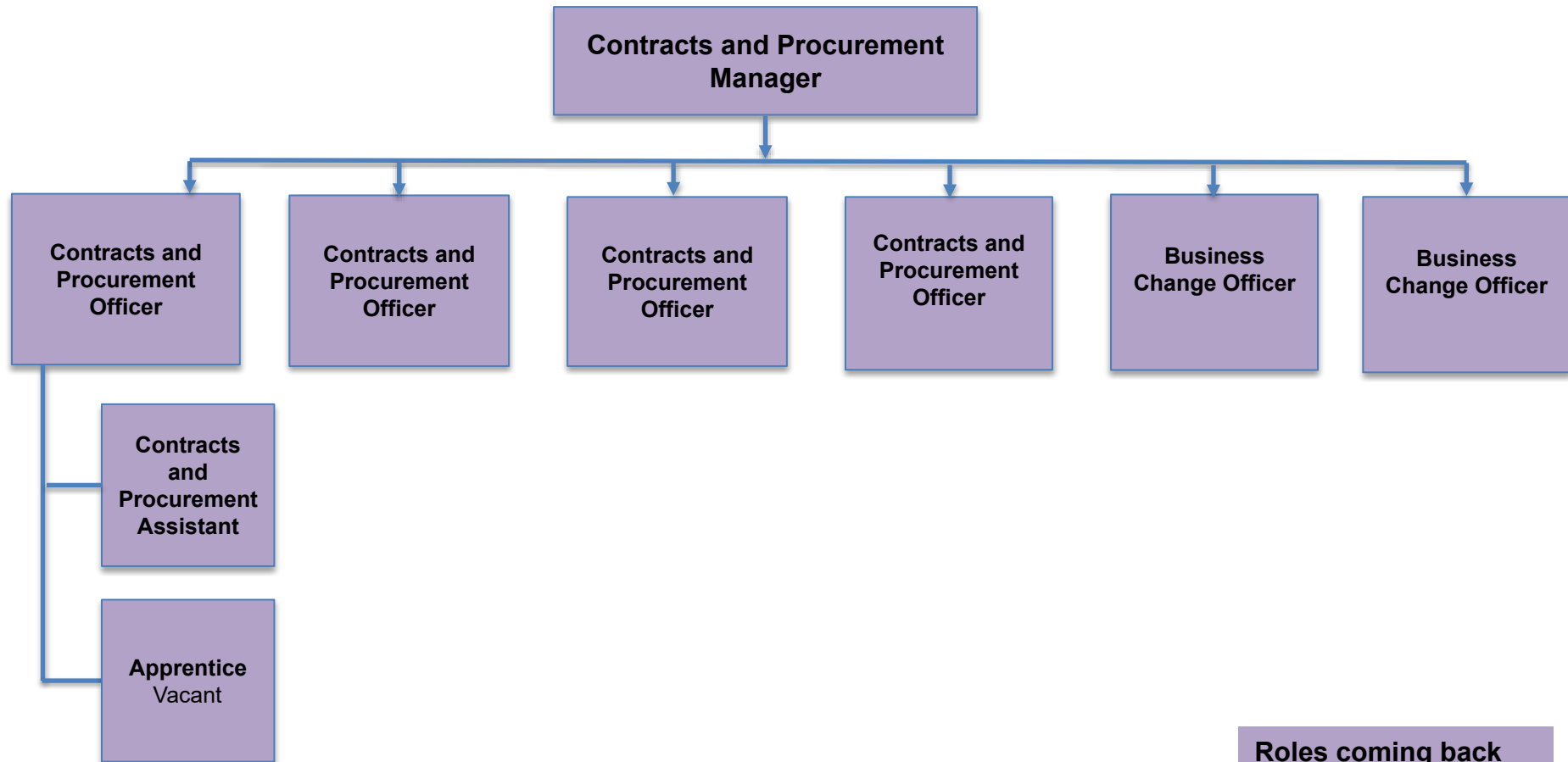


Open

Fair

Green

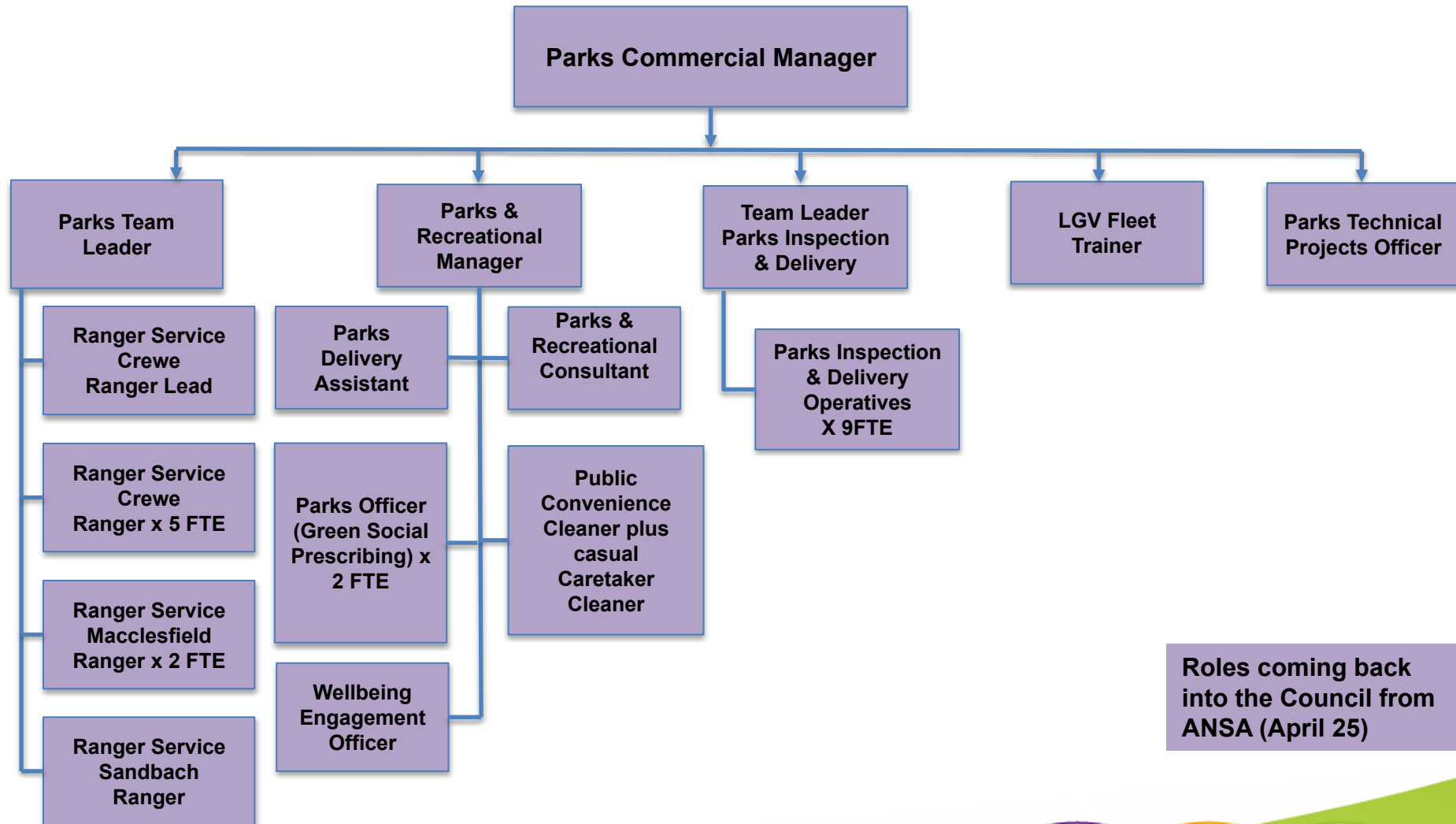
Contracts and Procurement



Roles coming back into the Council from ANSA (April 25)



Parks Commercial



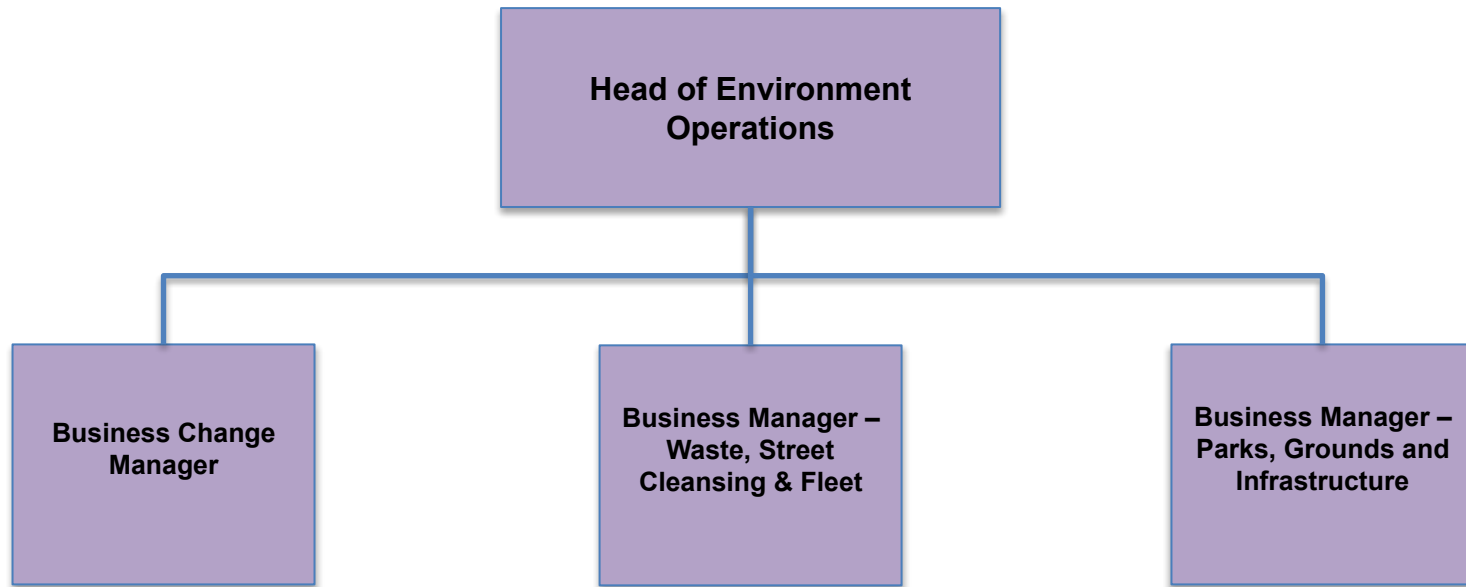
Roles coming back into the Council from ANSA (April 25)

Planning and Environment

Environment Operations



Environment Operations Team



Roles coming back
into the Council from
ANSA (April 25)

Open

Fair

Green

Other Structure Changes

It should be noted that a number of the ASDV “business units” have or will be transferring into other parts of the Council’s organisational structure, along with the associated revenue budgets, summarised as follows;

- **Orbitas Handypersons** – now sat within Housing team under Economy & Growth
- **ANSA Communications** – 6 staff, will sit in the corporate Communications team under Place Business Partner and will continue to support our services
- **ANSA Human Resources** – 6 staff, will move into the corporate HR Operations team
- **ANSA Transport (previously operational elements of Transport Service Solutions)** – will move into Strategic Transport team under Highways and Infrastructure division
- **ANSA Finance support** – a single individual will transfer into the corporate Finance team and will continue to support services under E&C
- **ANSA Personal Assistants to senior management team** – 2 members of staff will be located under Democratic Services alongside all other PA’s
- **ANSA Parks Design consultants** – 2 members of staff, will transfer into the Planning Service as part of landscape and design team

Open

Fair

Green